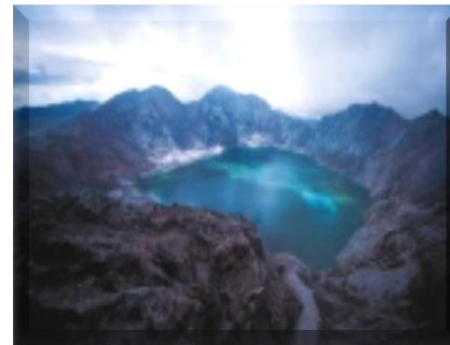




It's more fun in the  
**Philippines**



# Development of PTSA in the Philippines

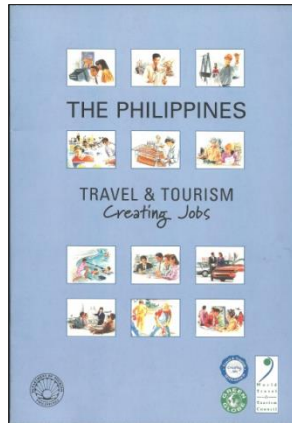


# Development of TSA

## The Impact of Tourism in the Philippine Economy

A Research Funded by the NSCB 1989

**1988:** Study on the contribution of tourism using I/O approach



**1996:** WTTC satellite account on tourism

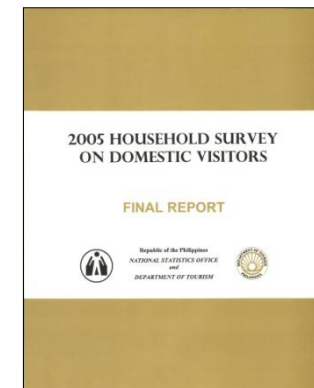
**1997:** Committee on TSA

**1999:** TSA conceptual framework

*The Philippine Tourism Satellite Account Framework 1999*

**2005:** Approval of the Tourism Classification System

First Household Survey on Domestic Visitor



It's more fun in the Philippines



# Development of TSA

**NSCB Resolution No. 6 s 2009**

WHEREAS tourism has a significant role and impact on the social and economic development and environmental and cultural heritage of the country, and is included as one of the growth strategies in the 2008-2010 Medium-Term Philippine Development Plan, specifically, in the context of job and social services administration, and the

WHEREAS tourism is integrated in many different economic sectors and thus serves as a key growth engine by propelling business activities, stimulating infrastructure and services development, and generating jobs and income;

WHEREAS there is a need to measure the economic contribution of tourism to provide basis for efficient and effective policy research, monitoring, analysis and development of the tourism industry;

WHEREAS NSCB Memorandum Order No. 1, Series of 1997, created the Interagency Committee on the Development of a Tourism Statistics (IAC-TS) to provide direction and support in the development of a unified national system;

WHEREAS, in 1999 and under the guidance of the IAC-TS, the National Statistical Coordination Board (NSCB), in collaboration with the Department of Tourism (DOT), prepared and released the first issue of the Philippine Tourism Statistics (PTS), covering the years 1999 and 1998;

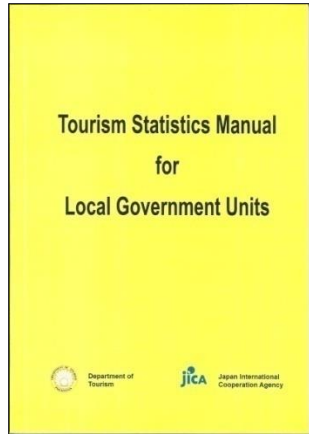
WHEREAS, the IAC-TS was subsequently reconstituted and renamed as the Interagency Committee on Tourism Statistics (IC-TS) through NSCB Memorandum Order No. 1, Series of 2002, and its terms of reference expanded to address the concerns on the improvement of tourism statistics and tourism service sector;

WHEREAS, the IC-TS and NSCB continued to collaborate and developed a methodology for the compilation of the PTS using as reference the World Tourism Organization's Tourism Satellite Account: Experimental Methodological Framework (TSA-EMF) and International Recommendations on Tourism Statistics (IRTS);

WHEREAS, using the methodology, the NSCB Technical Staff came up with the PTS 2009-2007 estimates;

WHEREAS, the IC-TS reviewed the PTS methodology and taking into the due limitations, agreed to endorse for approval by the Board the methodology for compiling the PTS (April 2010/2010/10)

**2006: Adoption of TSA methodology**  
**Release of First TSA estimate for 1999-2001**



**2007: Publish the Manual on Local Tourism Statistics**

**2009: Arrival Card was enhanced**

**Survey on Tourism Establishments**

**2010: PTSA methodology refined with IRTS 2008**

**Survey on Tourism Establishments in the Philippines 2009**

**2011: Official release of TSA for 2000-2011**

**Bridge TSA table was made in accordance with updated 2009 PSIC**



# Development of TSA

**2012 - 2014:**

**Annual release of TSA**

**Ongoing: TSA  
Quarterly compilation**

**Update of TSA based on  
2006 I/O**

**Compiling of TSA tables  
8 and 9**

## **Sharing the Philippines Experience**

***2001: Joint UN ESCAP/ WTO Workshop, Thailand***

***2002: First International Workshop on Tourism and TSA, Spain***

***2006: International Workshop on Tourism Statistics, Spain***

***2008: Technical Workshop on Tourism Statistics and TSA, Philippines***

***2009: 5<sup>th</sup> UNWTO International Conference on Tourism Statistics, Indonesia***

## **Engaging in TSA Development**

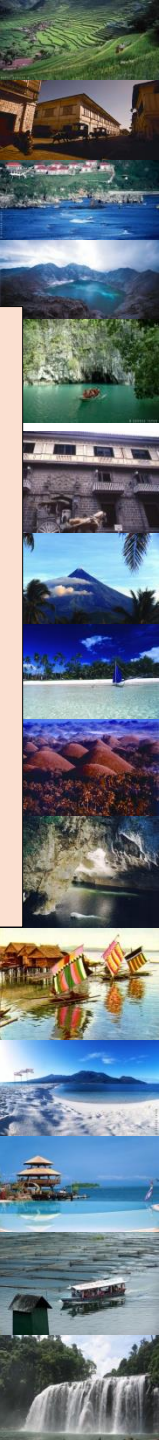
***2003: UNWTO Sub-Regional Workshop on Tourism Statistics and TSA, Philippines***

***2007: Worldwide consultation on IRTS Revision and TSA RMF***

***Expert Group on Tourism Statistics, USA***



**It's more fun in the  
Philippines**



# Development of TSA

TSA Tables	PTSA	Sources/ Status
Table 1: Inbound Tourism Expenditure by Products	✓	VSS and Arrival Card
Table 2: Domestic Tourism Expenditure by Products	✓	HSDV and RTS
Table 3: Outbound Tourism Expenditure by Products	✓	Partner country data
Table 4: Internal Tourism Consumption by Products	✓	
Table5: Production Accounts of Tourism Industries and Other Industries	✓	I/O Table
Table6: Domestic Supply and Internal Tourism Consumption by Products	✓	I/O Table and NAP
Table 7: Employment in Tourism Industries	✓	LFS and CPBI
Table 8: Tourism Gross Fixed Capital Formation and Tourism Industries and Other Industries		Ongoing compilation
Table 9: Tourism Collective Consumption by Functions and Level of Government		Ongoing compilation
Table10: Non-Monetary Indicator	✓	



# Development of TSA

DERIVED INDICATORS				
Table 1. Tourism Direct Gross Value Added (TDGVA) and Total GDP (current prices) in million pesos				
	TDGVA	% growth	Total GDP	
2000	210,144		3,580.74	
2001	228,974	8.96	3,888.80	
2002	246,877	7.82	4,198.34	
2003	265,737	7.64	4,548.10	
2004	300,475	13.07	5,120.43	
2005	333,054	10.84	5,677.74	
2006	365,837	9.84	6,271.10	
2007	404,641	10.61	6,892.72	
2008	443,305	9.56	7,720.90	
2009	458,976	3.53	8,026.14	
2010	523,877	14.14	9,003.48	
2011	572,315	9.25	9,709.33	
2012	631,036	10.28	10,567.33	
2013	688,809	9.16	11,548.19	
Annualized growth	9.93			
Table 2. Internal tourism expenditure versus Exports (current prices) in million pesos				
	Internal tourism expenditure	% growth	HFCE and Exports	
2000	288,703		4,424.66	
2001	333,425	15.5	4,653.38	
2002	329,717	(1.1)	5,065.04	
2003	353,103	7.1	5,526.36	
2004	439,739	24.5	6,302.02	
2005	545,813	24.1	6,878.67	
2006	605,641			
2007	701,371			
2008	699,991			
2009	633,398			
2010	776,444			
2011	973,556			
2012	1,134,861			
2013	1,307,051			
Annualized growth				
Table 3. Domestic Tourism Expenditure and HFCE (current prices) in million pesos				
	Domestic tourism expenditure	% growth	HFCE	Share to HFCE in %
2000	200,345		2,585,276	7.75
2001	245,179	22.4	2,863,459	10.8
2002	239,488	-2.3	3,102,445	8.3
2003	270,198	12.8	3,381,616	9.0
2004	333,923	23.6	3,814,889	12.8
2005	442,434	32.5	4,259,131	11.6
2006	458,492	3.5	4,677,986	9.8
2007	579,283	23.6	5,064,463	11.44
2008	510,353	-11.9	5,739,592	13.3
2009	533,731	4.6	5,993,427	4.4
2010	667,215	25.0	6,442,033	7.5
2011	849,094	27.3	7,132,581	10.7
2012	974,713	14.8	7,837,881	9.9
2013	1,117,171	14.6	8,464,883	8.0
Annualized growth	13.7		8.7	
Table 4. Inbound Tourism Expenditure and Total Exports (current prices) in million pesos				
	Inbound tourism expenditure	% growth	Exports	Share to total exports in %
2000	88,358		1,839,388	4.80
2001	94,914	7.4	1,739,853	5.43
2002	94,914	0.0	1,739,853	5.43
2003	94,914	0.0	1,739,853	5.43
2004	94,914	0.0	1,739,853	5.43
2005	94,914	0.0	1,739,853	5.43
2006	94,914	0.0	1,739,853	5.43
2007	94,914	0.0	1,739,853	5.43
2008	94,914	0.0	1,739,853	5.43
2009	94,914	0.0	1,739,853	5.43
2010	94,914	0.0	1,739,853	5.43
2011	94,914	0.0	1,739,853	5.43
2012	94,914	0.0	1,739,853	5.43
2013	94,914	0.0	1,739,853	5.43
Annualized growth				
Table 5. Share of Tourism industry employment to total employment in thousand persons				
	Tourism employment	% growth	Total employment	Share to total employment in %
2000	2,669		29,294	9.13
2001	2,724	2.06	29,154	9.34
2002	2,799	2.77	30,062	9.31
2003	2,940	5.03	30,627	9.60
2004	3,077	4.65	31,611	9.73
2005	3,136	1.94	32,312	9.71
2006	3,217	2.57	32,962	9.76
2007	3,359	4.41	33,554	10.01
2008	3,415	1.67	34,089	10.02
2009	3,547	3.87	35,060	10.12
2010	3,694	4.14	36,047	10.25
2011	3,823	3.48	37,191	10.28
2012	4,432	1.66	37,680	11.78
2013	4,557	1.03	38,118	11.98
Annualized growth	4.14		1.97	

note:  
GDP, HFCE, and exports data from national income estimates revised series 1998-2011 updated as of May, 2014

TSA	PTSA Tables	Details
	Table 11: Derived Indicators	Share of TDGVA to GDP
		Share of Internal Tourism Expenditure to the sum of HFCE and Exports
		Share of Domestic Tourism Expenditure to the sum of HFCE
		Share of Inbound Tourism Expenditure to Total Exports
		Share of Tourism Industry Employment to Total National Employment

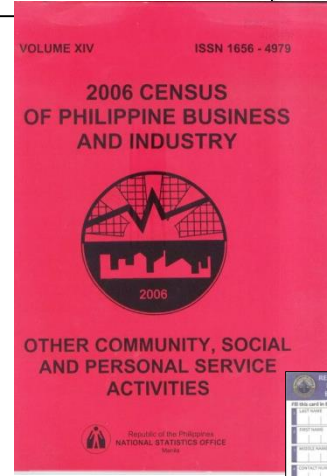


# Data Support

- ▶ Tourism consumption expenditure
  - Arrival Cards
  - Visitor Sample Survey
  - MICE Survey
  - Household Survey on Domestic Visitors
  - Regional Travelers Data
  
- ▶ Production accounts/domestic supply
  - Input/Output Table
  - National Accounts
  
- ▶ Tourism employment
  - Labor Force Survey
  - Census of Philippine Business and Industry
  - Quarterly Survey of Philippine Business and Industry

The image shows several forms from the Department of Tourism:

- Incentive Travel Survey:** A form with a header 'DEPARTMENT OF TOURISM TOURISM RESEARCH AND STATISTICS DIVISION INCENTIVE TRAVEL SURVEY'. It includes a table with columns for 'No. of Visitors', 'Sex', 'Age', 'Religion', 'Type of Trip', 'No. of Rooms Used', 'Night Load', and 'Budget'.
- Visitor's Sample Survey:** A form titled 'DEPARTMENT OF TOURISM VISITOR'S SAMPLE SURVEY'. It contains various sections for demographic information and activities, such as '1. What did you do for the majority of your visit to the Philippines?', '2. How many nights did you actually do outside from the hotel premises?', and '3. How many nights did you stay in the Philippines?'.
- Arrival Card:** A form titled 'REPUBLIC OF THE PHILIPPINES DEPARTMENT OF JUSTICE BUREAU OF IMMIGRATION ARRIVAL CARD'. It includes fields for 'DATE OF ENTRY', 'PLACE OF BIRTH', 'DATE OF BIRTH', 'SEX', 'RELIGION', 'EDUCATIONAL ATTAINMENT', 'OCCUPATION', 'TYPE OF TRIP', 'PURPOSE OF VISIT', 'DATE OF DEPARTURE', and 'PLACE OF DEPARTURE'.





# Data Collection Issues in the PTSA Compilation

